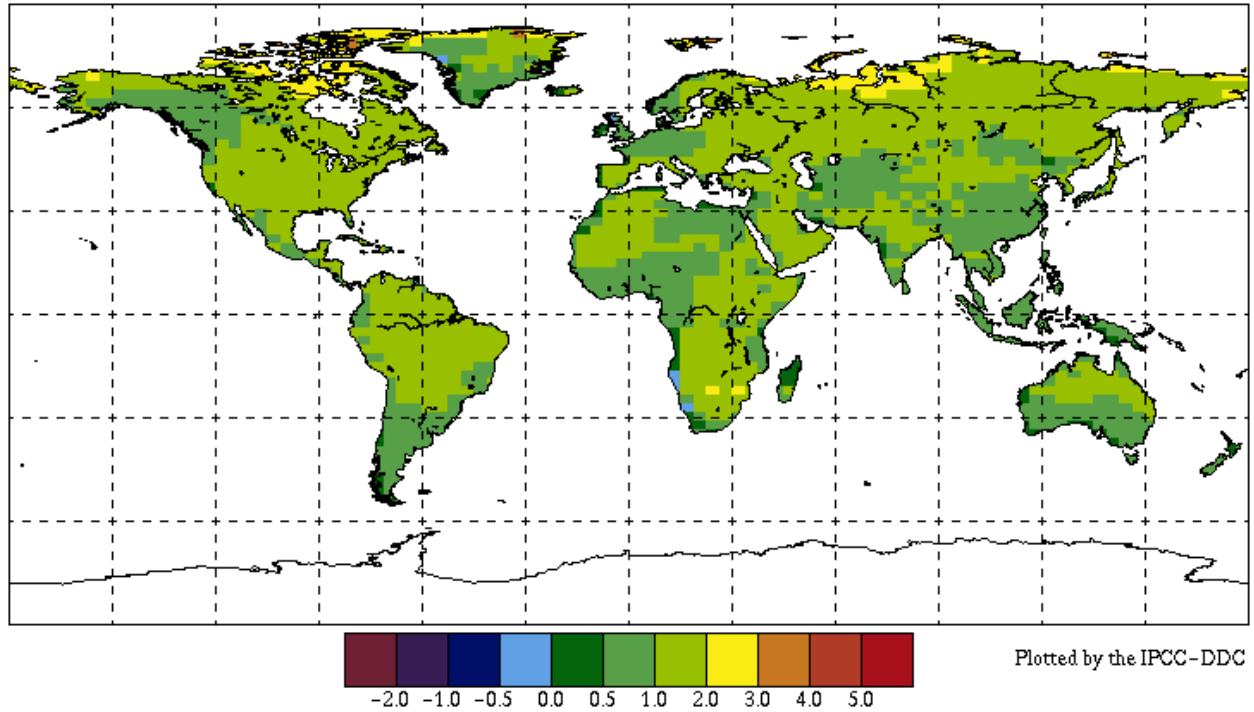


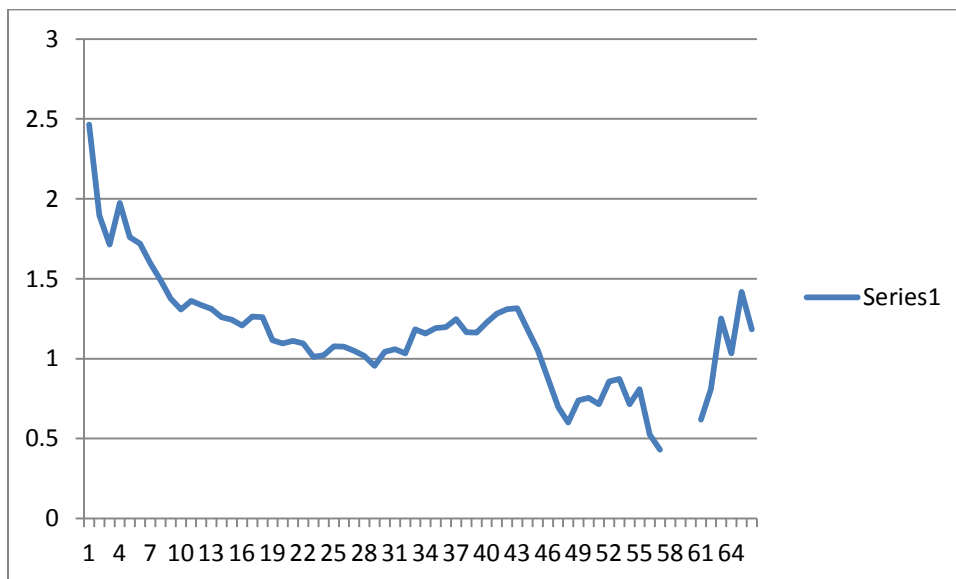
Project 2 Figures

Annual , Land Only HadCM3/A1F Plot of Mean Temp of 2020s

HadCM3/A1F January to December Mean Temperature (degrees C) 2020s relative to 1961-90

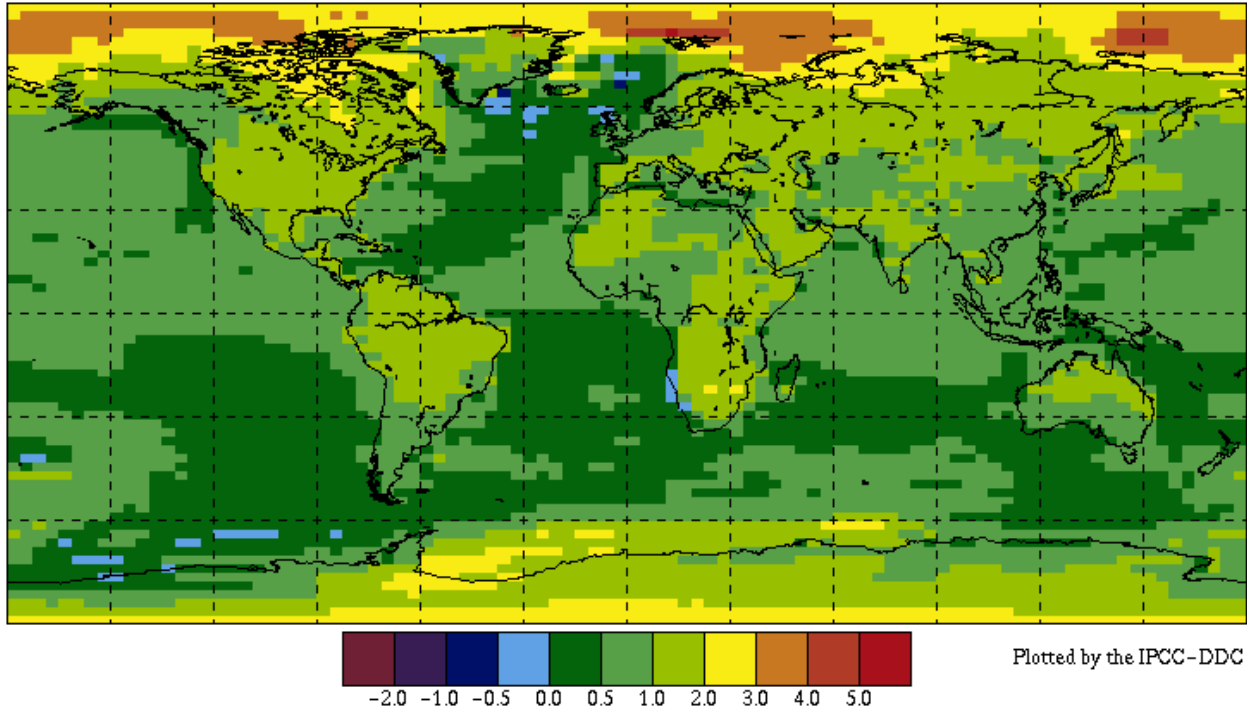


Average **Annual** Temperature Change from North To South, Global Average Temp Change = **1.15703 C**

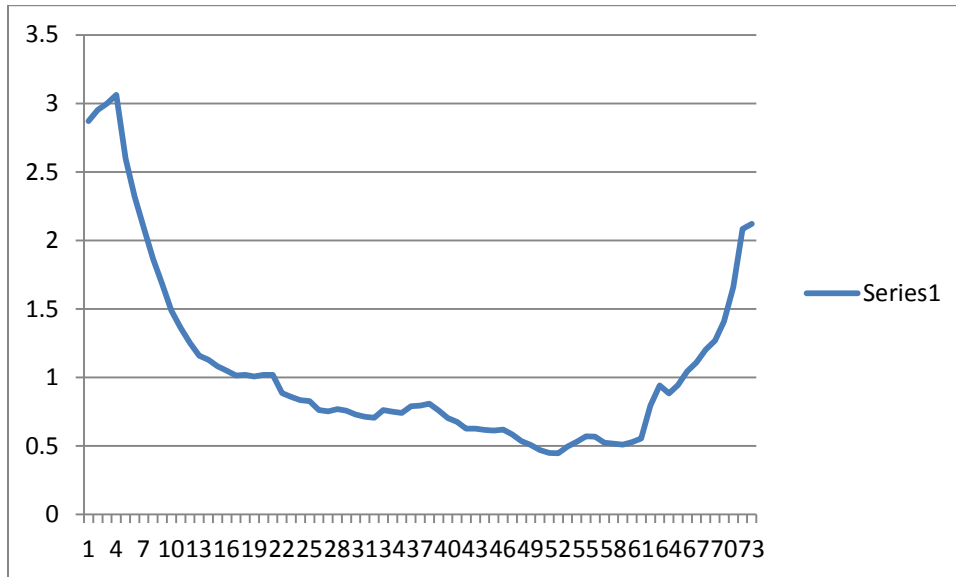


Annual , Land+Ocean HadCM3/A1F Plot of Mean Temp of 2020

HadCM3/A1F January to December Mean Temperature (degrees C) 2020s relative to 1961-90

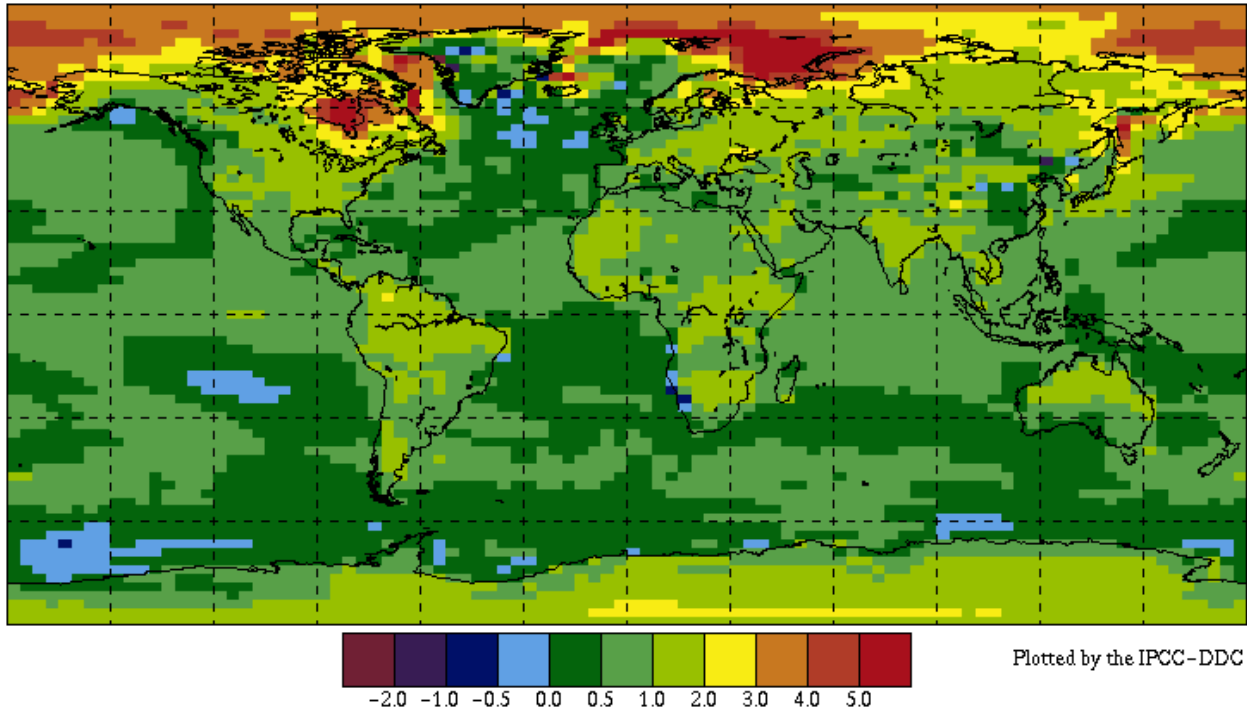


Average **Annual** Temperature Change from North To South, Global Average Temp Change = **1.0652 C**

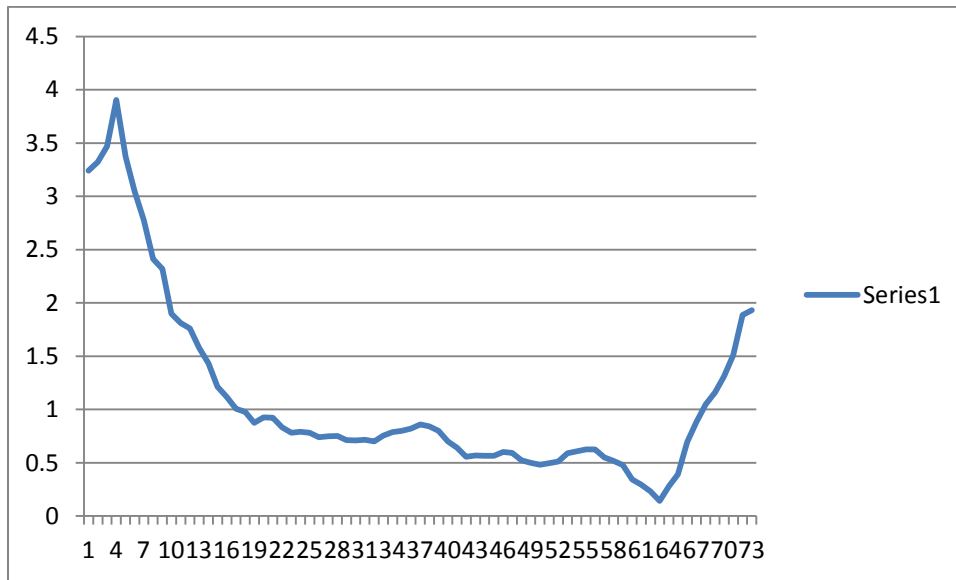


Dec-Feb , Land+Ocean HadCM3/A1F Plot of Mean Temp of 2020

HadCM3/A1F December to February Mean Temperature (degrees C) 2020s relative to 1961-90

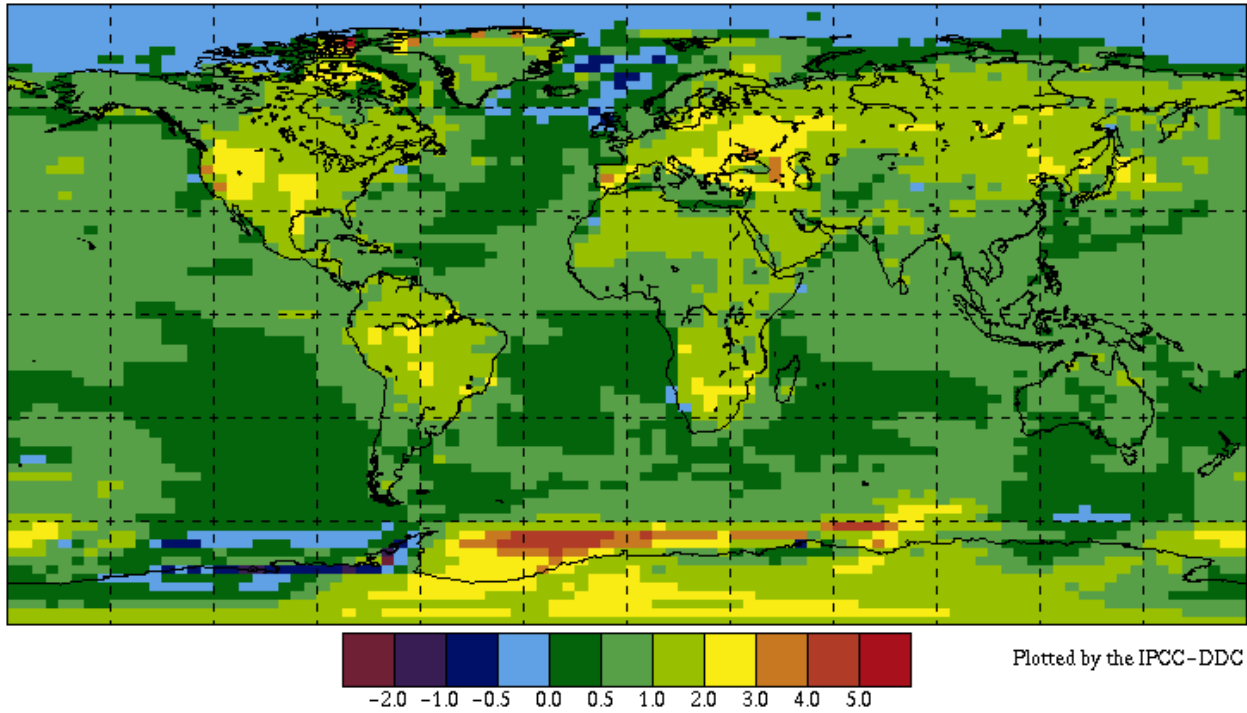


Average Temp Change from Dec-Feb, Global Average Temp Change = 1.1054 C

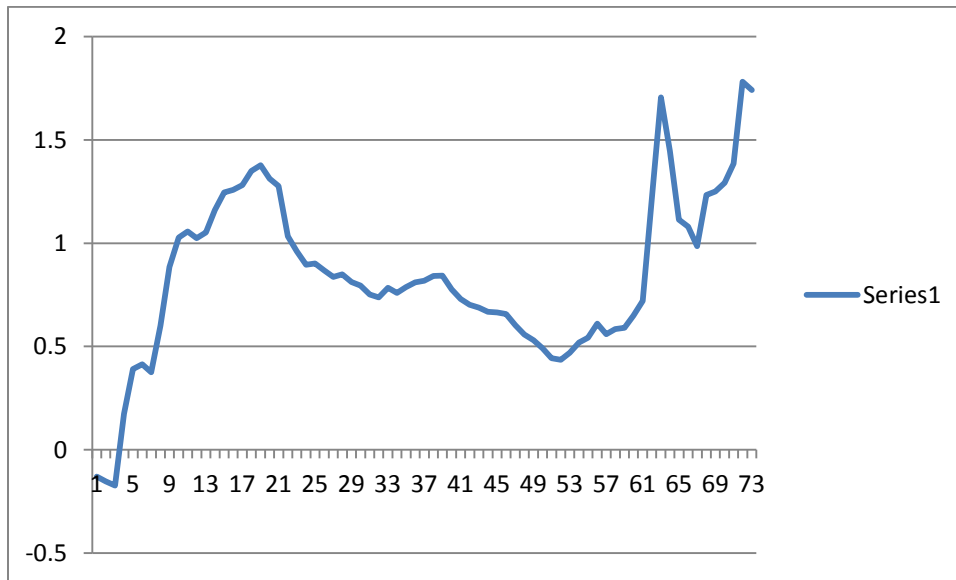


Jun-Aug , Land+Ocean HadCM3/A1F Plot of Mean Temp of 2020

HadCM3/A1F June to August Mean Temperature (degrees C) 2020s relative to 1961-90

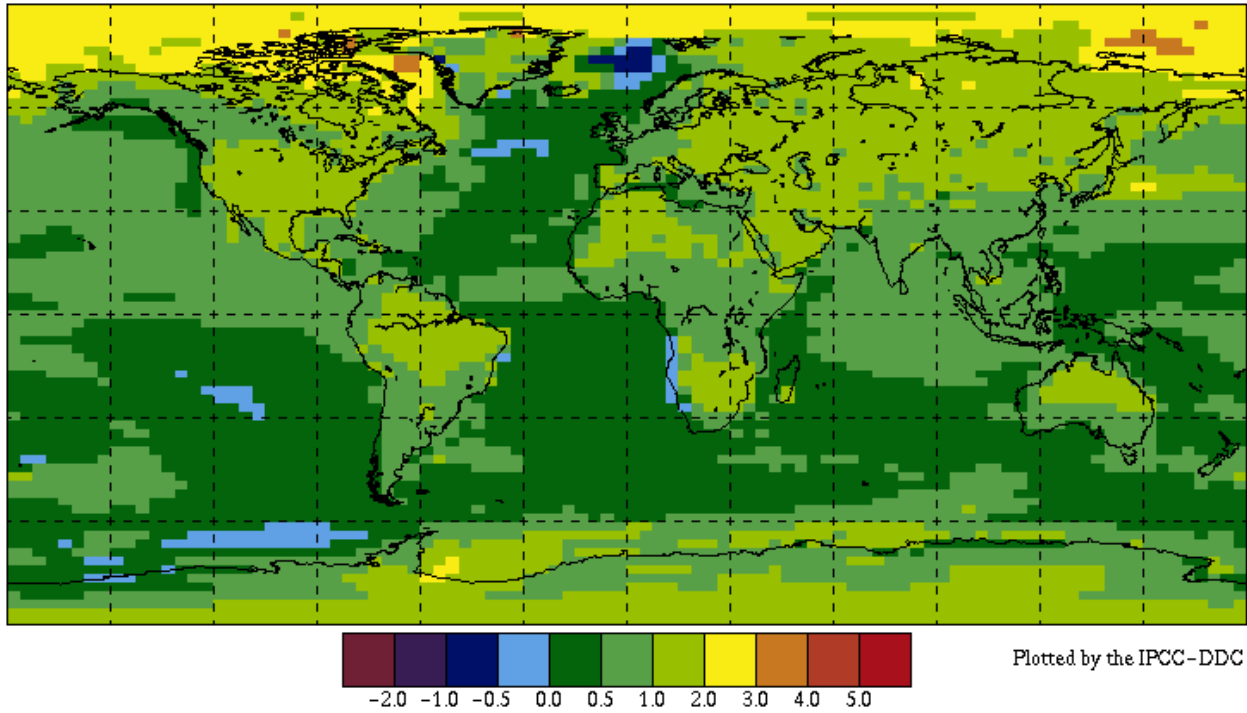


Average Temp Change from Jun-Aug, Global Average Temp Change = **0.8396 C**

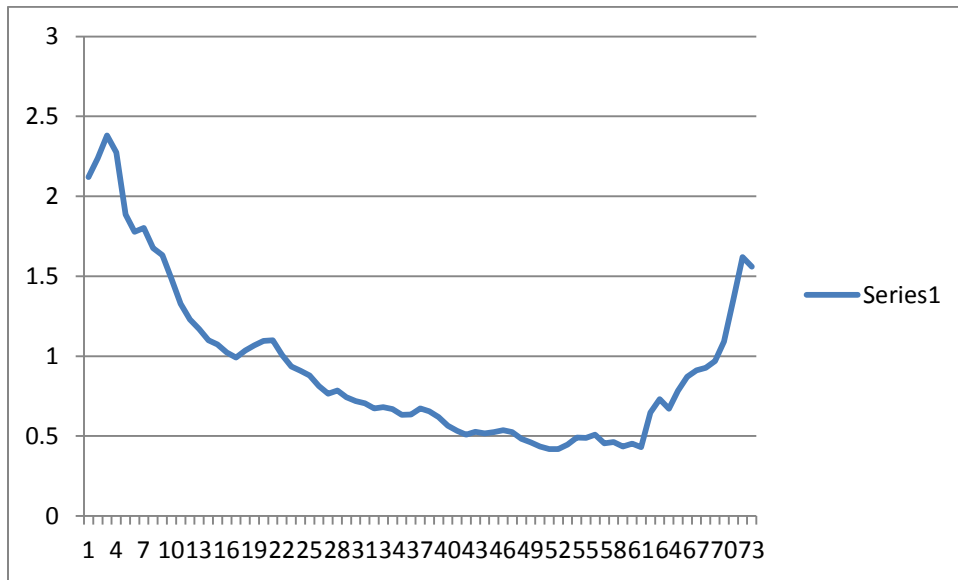


Annual , Land+Ocean HadCM3/B2b Plot of Mean Temp of 2020

HadCM3/B2b January to December Mean Temperature (degrees C) 2020s relative to 1961-90

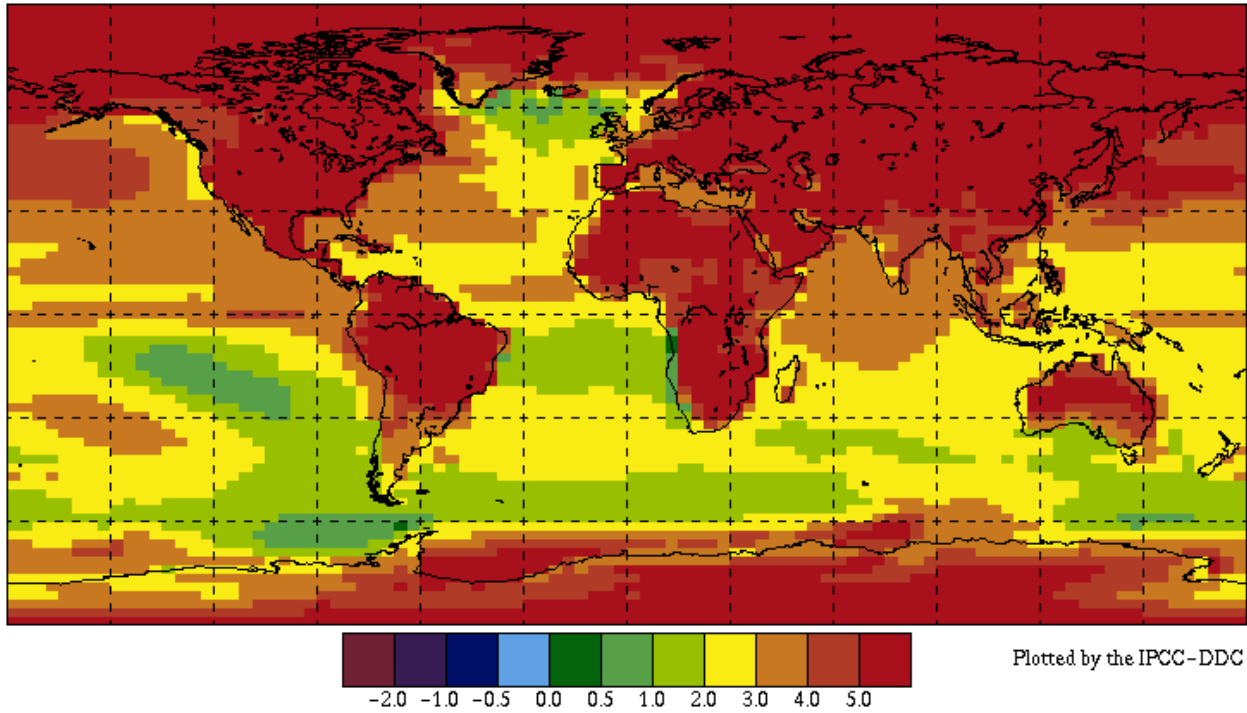


Average **Annual** Temp Change, Global Average Temp Change = **0.9280 C**

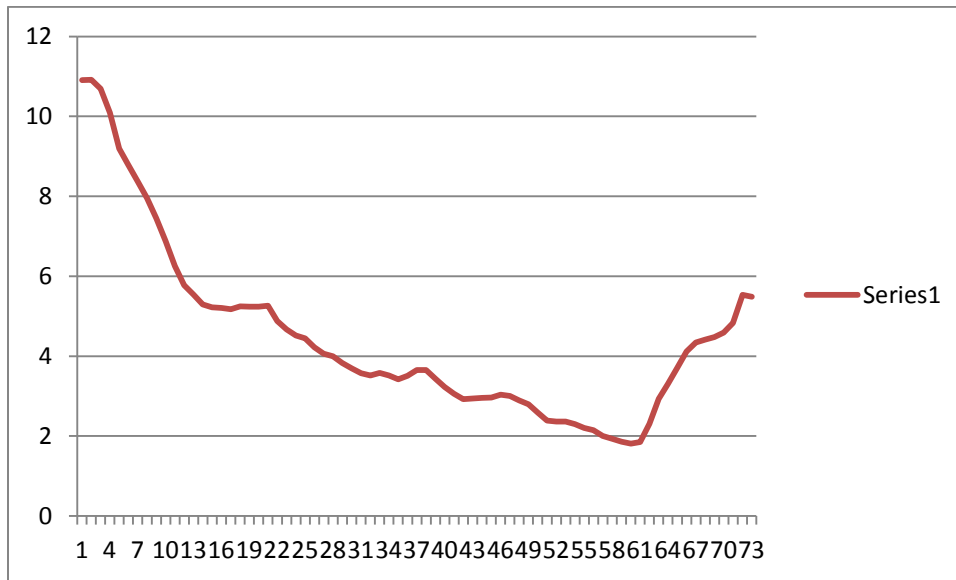


Annual , Land+Ocean HadCM3/A1F Plot of Mean Temp of 2080

HadCM3/A1F January to December Mean Temperature (degrees C) 2080s relative to 1961-90

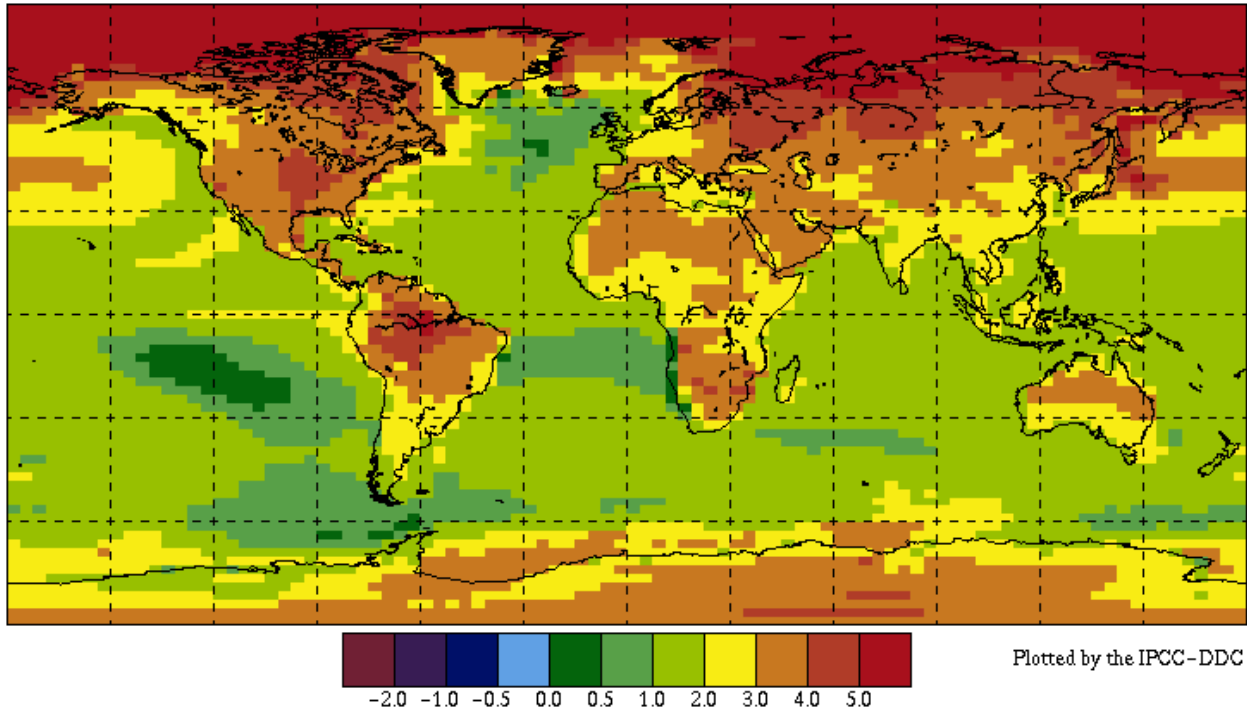


Average **Annual** Temp Change, Global Average Temp Change = **4.4728 C**



Annual , Land+Ocean HadCM3/B2b Plot of Mean Temp of 2080

HadCM3/B2b January to December Mean Temperature (degrees C) 2080s relative to 1961-90



Average **Annual** Temp Change, Global Average Temp Change = **2.6787 C**

